

How to use



group registration



Group Applicants



Apply with GoogleForm

- You can directly ask questions that you don't want to make public!
- You can easily create a contact for questions.
- You can register multiple groups to consult with various groups at once!



筑波大学グローバルコミュニケーション教育センター
日本語・日本事情遠隔教育拠点
The Center for Distance Learning of Japanese and Japanese Issues

How to use



group registration



Group Applicants



Group QR Code Issued

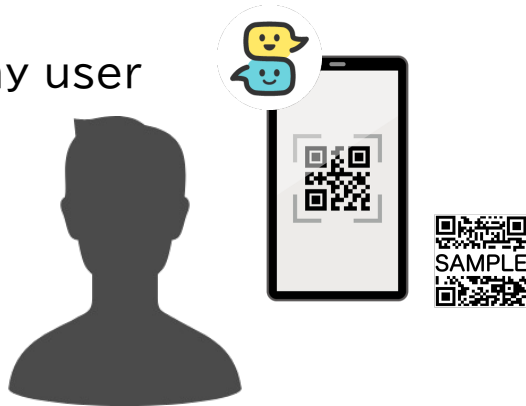


筑波大学グローバルコミュニケーション教育センター
日本語・日本事情遠隔教育拠点
The Center for Distance Learning of Japanese and Japanese Issues

How to use

group registration

Any user

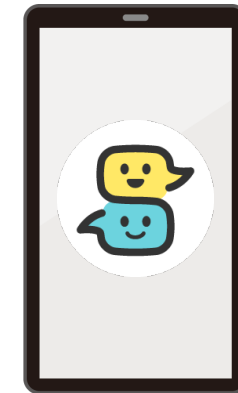
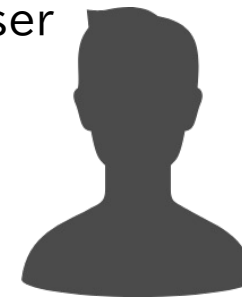


Read QR code with

From "QR Group Registration" on the Settings page, "QR group added."

Scan and save the QR code.

Any user



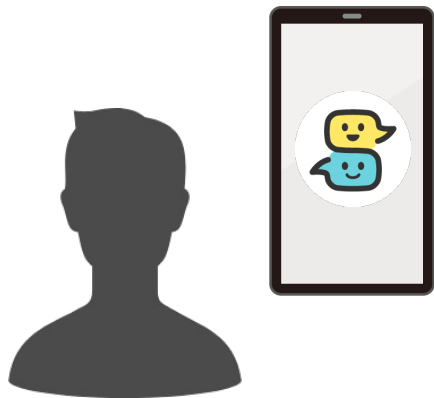
When submitting a

question in

Select one of the following.

- 1.SuMo and Group
- 2.SuMo only
- 3.Group only

How to use



Any user



Group Applicants

The user's question is emailed to the group applicant.
Contact us directly at the address provided in the email.